

Welcome to Pforzheim University

HS PF



Meet the International Office

Meike Schwarz

Manager Incoming Exchange Students, International Programs Office (AAA)

Jochen Ebert

Head International Department, Business School (ISP & IMEP)



Video about Pforzheim University (English)



https://www.youtube.com/watch?v=JOt_jgWC0rM

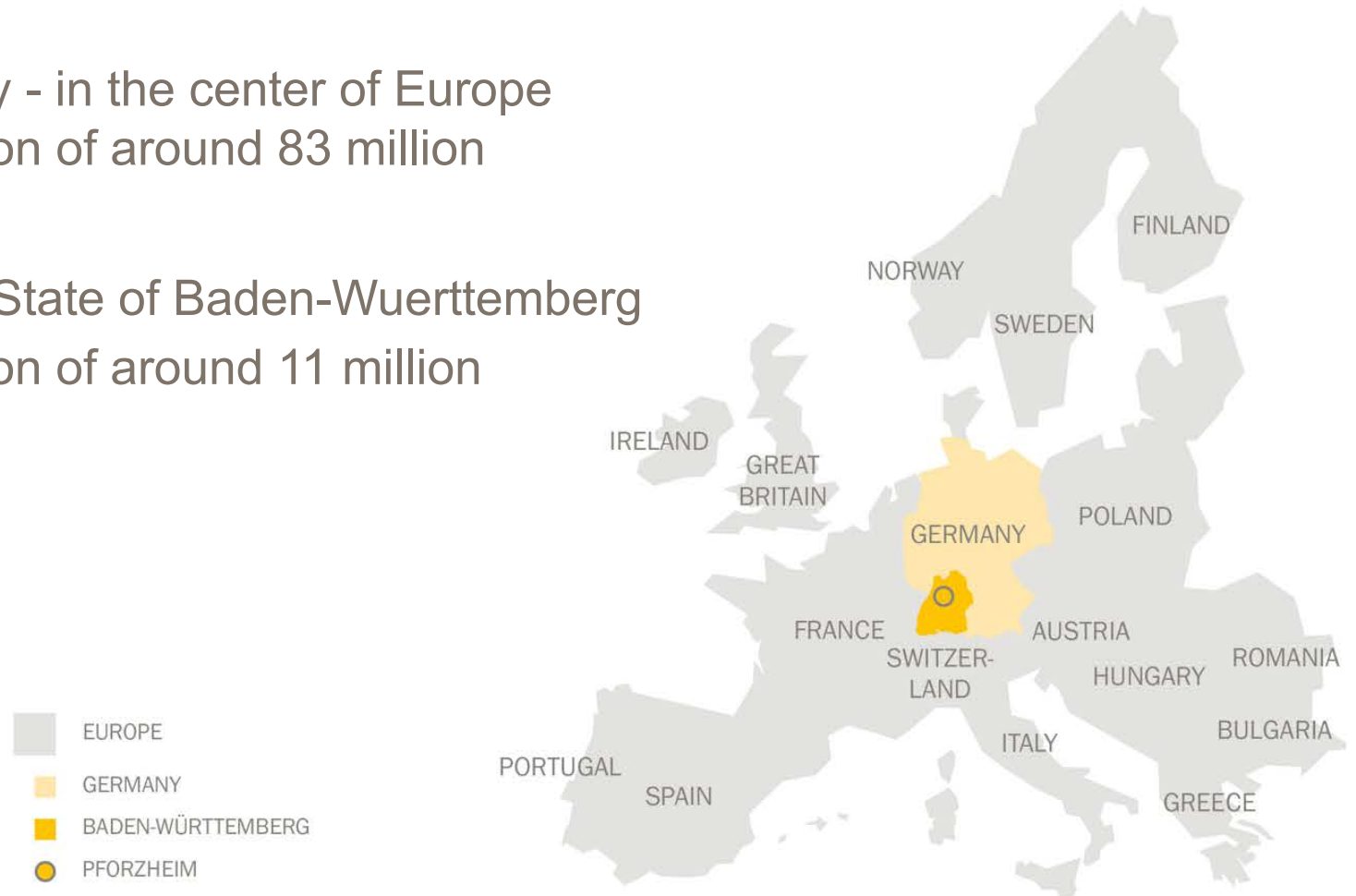
WHERE
WE ARE.



Geographical Location

Germany - in the center of Europe
Population of around 83 million

Federal State of Baden-Wuerttemberg
Population of around 11 million

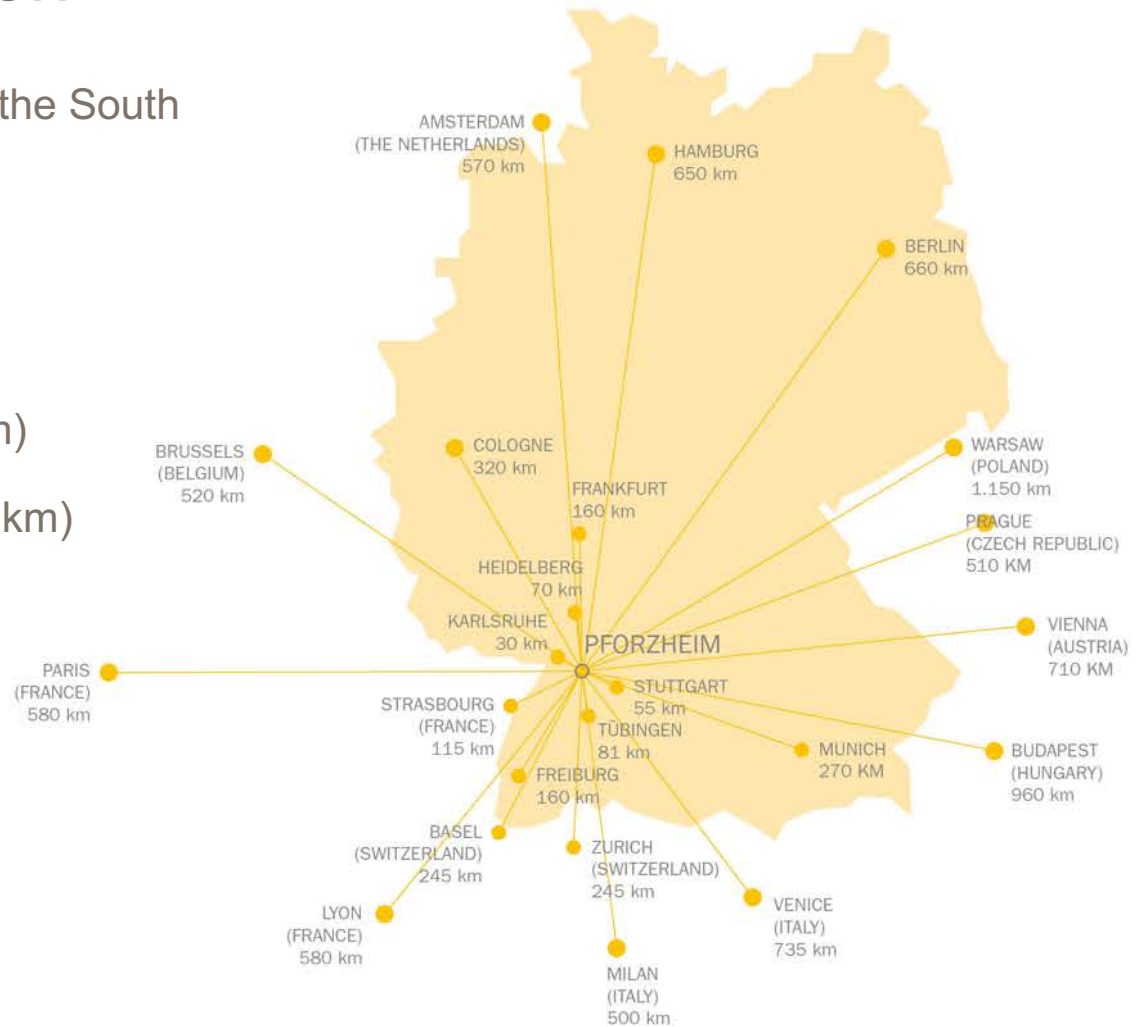


Geographical Location

Baden-Wuerttemberg is located in the South West of Germany

Distances from Pforzheim:

- Close to France (40 km)
- Switzerland and Austria (200 km)
- Capital Stuttgart in the east (40 km)
- Next airports:
 - Stuttgart (45 km)
 - Baden-Baden (60 km)
 - Frankfurt a. M. (160 km)



Baden-Württemberg NOT ONLY STEREOTYPES.



Pforzheim

Golden City and Gateway to the Black Forest



- Industrial city at the northern edge of the black forest
- Inhabitants: 320.000 (City: 120.000, County: 200.000)
- Jewellery manufacturing since 1767 leading in jewellery & silver production (Wellendorf, Chopard etc.)
- Major industrial companies nearby:



BOSCH



PORSCHE



DAIMLER

fischer





PFORZHEIM UNIVERSITY

Pforzheim University

- Public university under supervision of the state of Baden-Wuerttemberg
- University of Applied Sciences - highly practical focus
- Founded in 1992 as a merger of
 - ❖ **Pforzheim School of Design** founded in 1877
 - ❖ **Pforzheim Business School** founded in 1963
 - ❖ **School of Engineering** founded in 1992



Pforzheim University

all
Professors
have 5+ years
work
experience
outside
university

University in numbers:

6.000	students
180	professors (+ international visiting profs)
300	lecturers
340	employees
28	Undergraduate programs
16	Master's degree programs

- Various non-degree study programs
- About 100 agreements on academic cooperation with partners all over the world



Business School

Students full time: 3.200

- Accredited by AACSB
- Member of EFMD
- All national accreditations
- One of Germany`s largest Business Schools
- Broad range of study programs
- More than 200 companies contributing

PRME Principles for Responsible Management Education



International Programs Office

Pforzheim University



Reputation



Employer's Ranking: Wirtschaftswoche:
Each year under top 10 (2020: #7, 2019, 2018 #3)



National Ranking: CHE – Centre for Higher Education:
Top rating in all categories (four green lights out of four)



Ed Universal Ranking 2020
#1: Best University of Applied Sciences in Germany
#11 among all Universities (Universities & U of Applied Sciences in Germany)



The European Commission's new U-Multirank 2021 once again ranks Pforzheim University among the leading universities in terms of practical orientation. In the category "Publications with Industry Partners", we are among the "Top 25 Global Performers" among the approximately 1,900 universities surveyed.



Pforzheim University belongs to the group of currently
11 AACSB accredited academic institutions in Germany.

School of Engineering

Students full time: 2.300

Undergraduate programs

- Business Administration & Engineering
- Mechanical Engineering
- Electrical Engineering
- Computer Engineering
- Mechatronics
- Medical Engineering

International Programs Office

Pforzheim University



School of Design

Students full time: 700

Undergraduate programs

- Accessory Design
- Industrial Design
- Fashion
- Jewellery
- Transportation Design
- Visual Communication

<https://designpf.hs-pforzheim.de/en/international>

International Programs Office

Pforzheim University





EXCHANGE PROGRAMS

Our Exchange Programs

No
knowledge
in German
required!



Non-degree seeking Programs

Bachelor Level (Business):
International Study Program (ISP)

Master Level (Business):
International Master
Exchange Program (IMEP)

BA & MA Design Students

Double Degree Programs

B.Sc. in International Business

B.Sc. in International Marketing

B.Sc. in Industrial Engineering

M.Sc. in Controlling, Finance &
Accounting (MACFA)

M.Sc. in Information Systems (MIS)

Exchange Programs Bachelor & Master (Non-degree)

International Study Program (ISP for Bachelor)

International Master Exchange Program (IMEP for Master)

Degree	Non-degree seeking Exchange programs with credit transfer	Courses
Duration	1 - 3 semesters	Bachelor level: 60+ courses from 9 subject areas
Language	<ul style="list-style-type: none">• All courses in English, German also possible• min. an advanced B2 level (recommended is C1)	Master level: 20+ courses from 3 subject areas
Internship	Optional (30 ECTS for 100 working days)	Double Degrees: accordingly to study plan Design students: course selection mutual agreement Course Catalogue: ISP: http://www.hs-pforzheim.de/isp/courses IMEP: http://www.hs-pforzheim.de/imep/courses

Exchange Programs certificates

The ISP offers two non-degree certificates on Bachelor level

The “**Certificate International Management**” issued to students who successfully complete courses with a total workload of 30 ECTS credits.

The “**Diploma International Management**” for students earning 60 ECTS credits within two semesters.

Students may achieve the required number of credits

- by successfully passing courses with a total workload of 60 ECTS credits, or
- by combining successfully completed courses with a total workload of 30 ECTS credits from the first semester of study, with an one-semester internship completed in the second semester.

Exchange Programs

Exchange Language

German as a foreign language

all levels (A1 – C1) for free

can be credited (5 ECTS)

Exchange Culture

Additional courses focused on German culture

ISP field trips / company visits
(Berlin, Frankfurt, Strasbourg, Stuttgart, Munich)



Why participating in the International Study Program at Pforzheim University?

- Integration of exchange students into the local student community
- 60+ courses taught in English
- A highly practical focus (all teachers have worked or are still working outside the university)
- Combine Business & Engineering
- German as a foreign language (all levels for free)
- Additional courses focused on German culture
- ISP field trips / company visits (Berlin, Frankfurt stock market, Strasbourg, Stuttgart, Munich)

International Programs Office

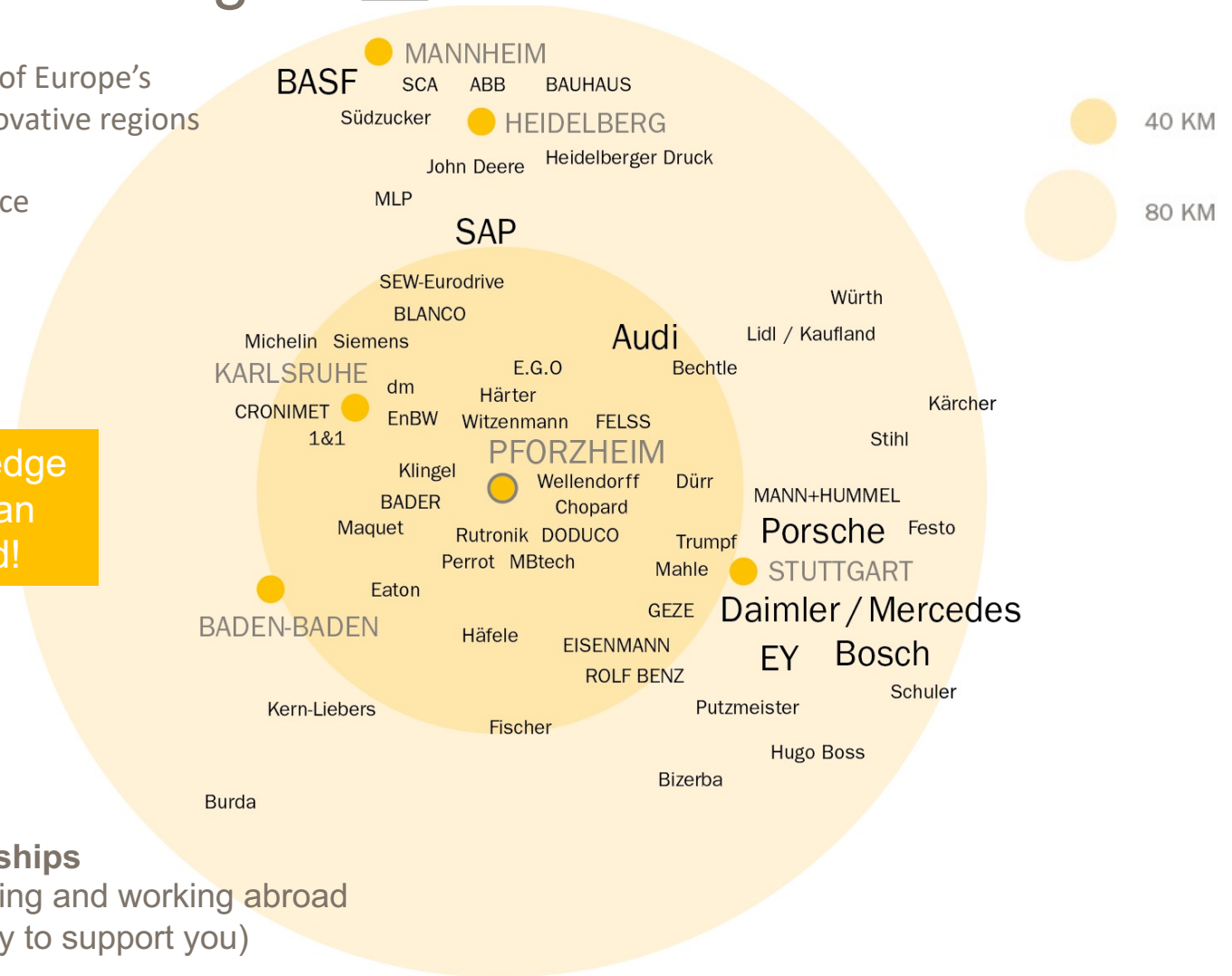
Pforzheim University



Companies in our region

Pforzheim is located in one of Europe's most industrialized and innovative regions and therefore perfect to get some practical experience as well

No knowledge in German required!

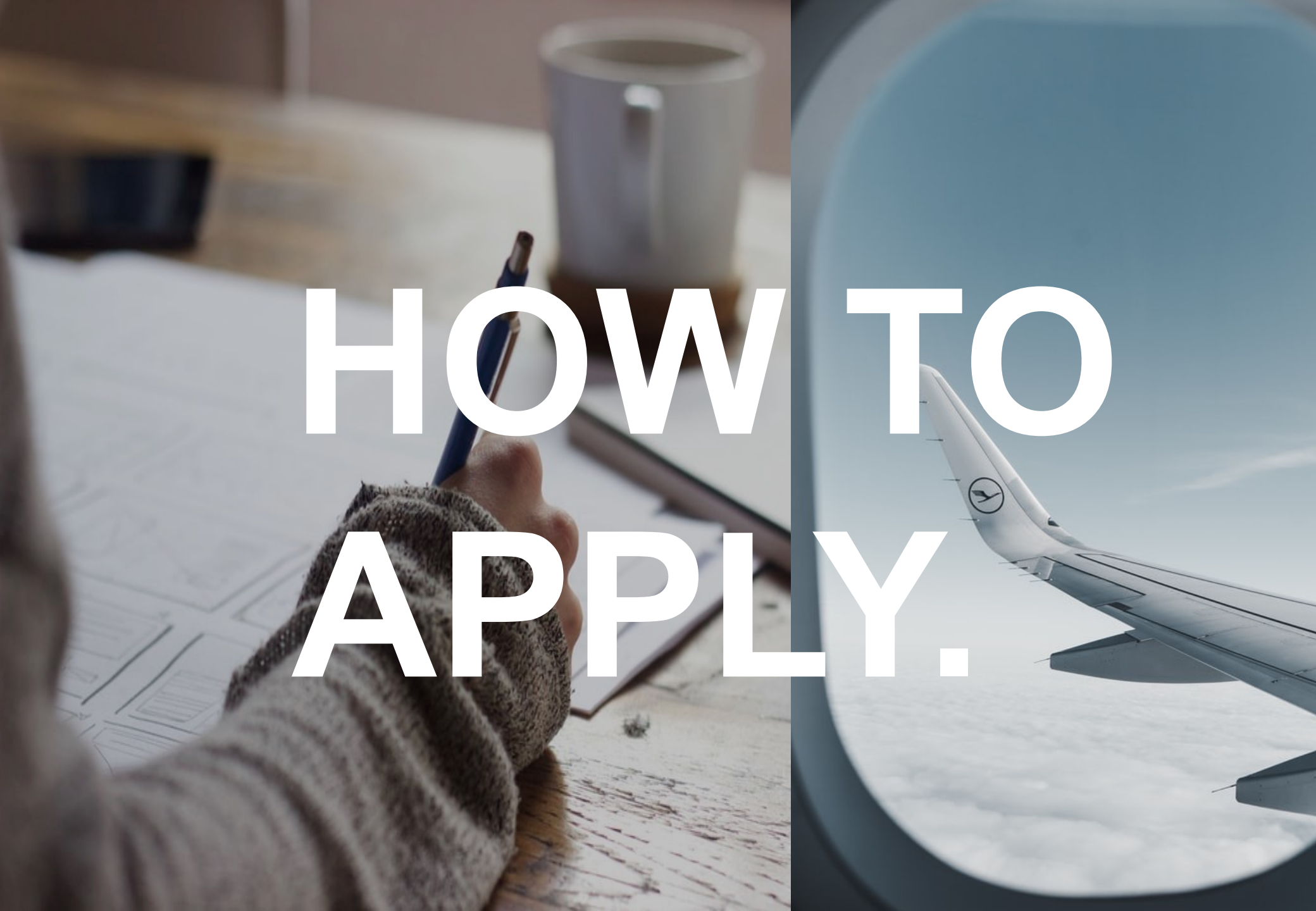


We offer access to **internships** for a combination of studying and working abroad (our career center is happy to support you)

International Programs Office

Pforzheim University

**HOW TO
APPLY.**



PFORZHEIM UNIVERSITY

Application Process

Your next steps



01

Documents
(incl. Learning
Agreement)



02

Letter of
Acceptance



03

Visa
(only non EU)



04

Housing



05

Health
insurance



06

Enrollment



07

Welcome

International Programs Office

Pforzheim University


A complete application contains

- application form
- a short CV
- 1 portrait photo for the student id card (passport photo in jpeg format)
- transcript of records (grade sheet)
- a sufficient TOEFL score or an equivalent official English certificate, proofing a B2 level
- Learning Agreement proposal:
 - > ERASMUS (EU)
 - > Overseas/non-Erasmus



Learning Agreement - Erasmus

- Before / During / After mobility
 - Erasmus Code: D PFORZHE01
 - You can leave the **contact person** empty (before the mobility)
- > we will forward it to the right department / person (ISP = Jochen Ebert)



Erasmus+

Learning Agreement

Student Mobility for Studies

Higher Education:
Learning Agreement form
Student's name
Academic Year 20.../20...

Student	Last name(s)	First name(s)	Date of birth	Nationality ¹	Sex [M/F]	Study cycle ²	Field of education ³
Sending Institution	Name	Faculty/Department	Erasmus code ⁴ (if applicable)	Address	Country	Contact person name ⁵ ; email; phone	
Receiving Institution	Name	Faculty/ Department	Erasmus code (if applicable)	Address	Country	Contact person name; email; phone	

Before the mobility

<p><i>Study Programme at the Receiving Institution</i></p> <p>Planned period of the mobility: from [month/year] to [month/year]</p>				
<p>Table A Before the mobility</p>	Component ⁶ code (if any)	Component title at the Receiving Institution (as indicated in the course catalogue ⁷)	Semester (e.g. autumn/spring; term)	Number of ECTS credits (or equivalent) ⁸ to be awarded by the Receiving Institution upon successful completion

Learning Agreement – Non-Erasmus/ Overseas

- Before / During / After mobility
 - You can leave the **receiving institution** empty (before the mobility)
- > we will forward it to the right department / person (ISP = Jochen Ebert)

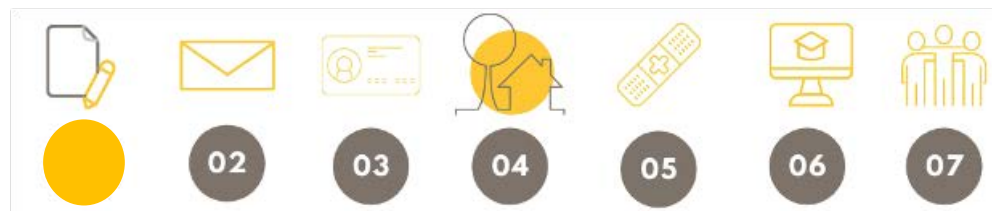
Total of ECTS credits		
Student's signature		

Sending institution			
We confirm that the above outlined study program is approved			
Departmental coordinator (Faculty)		Institutional coordinator (International Office)	
Name		Name	
Signature		Signature	
Date		Date	

Receiving institution			
We confirm that the above outlined study program is approved			
Departmental coordinator (Faculty)		Institutional coordinator (International Office)	
Name		Name	
Signature		Signature	
Date		Date	

Learning Agreement - Online

- Online Learning Agreement
 - Pforzheim University does not use the OLA yet
- > But we can sign your Learning Agreement online
- contact person for ISP/IMEP: Jochen Ebert (jochen.ebert@hs-pforzheim.de)



A wooden signpost with multiple red directional signs in German. The signs are attached to a thick wooden pole. The background is a clear blue sky. The text on the signs includes: STRAND, KINNES, ZELTEINGANG, AUSGANG/BUS, RÄDER, ASSE, BOOTAUFHÄNGE, and KINO.

STRAND

KINNES

ZELTEINGANG

AUSGANG/BUS

RÄDER
ASSE

BOOTAUFHÄNGE
KINO

WHAT?
WHERE?
WHEN?

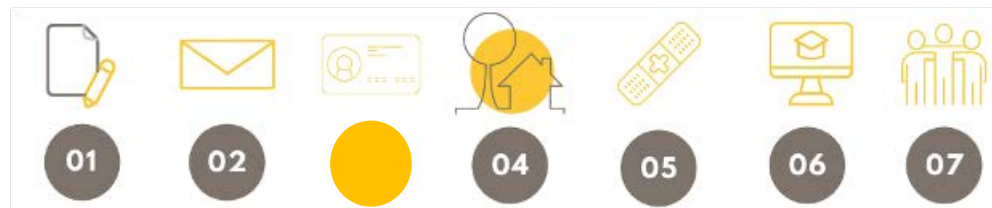


VISA

- Only necessary for non EU students
- Exceptions: Not applicable for students from Australia, UK, Canada, Israel, Japan, South Korea, New Zealand, USA, Andorra, Brazil, El Salvador, Honduras, Monaco and San Marino who usually enter Germany without a visa.
- If you need to specify a contact person, you can use the following details:

Meike Anna Schwarz (Ms)
International Programs / Akademisches Auslandsamt
Pforzheim University
Tiefenbronnerstr. 65
75175 Pforzheim DE

+49 7231 28 6147
aaa@hs-pforzheim.de



Academic Calendar



Fast Track
option for selected
courses in Winter;
semester ends
before
Christmas

- 2 semesters per year
- Winter Semester: October - January; examination period until mid of February
(Fast Track option ends before Christmas)
- Summer Semester: mid of March - beginning of July; examination period until end of July
- German pre-semester language courses 4 weeks before semester start

Deadlines for international applications:

- For Winter: June, 1
- For Summer: November, 1

Academic Calendar:

https://businesspf.hs-pforzheim.de/international/international_study_program_isp/information_for_incoming_bachelor_exchange_students/academic_year/

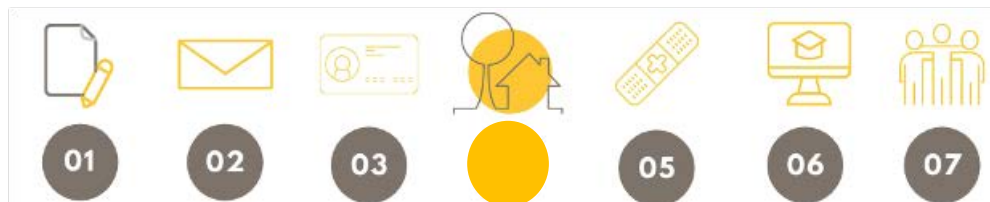
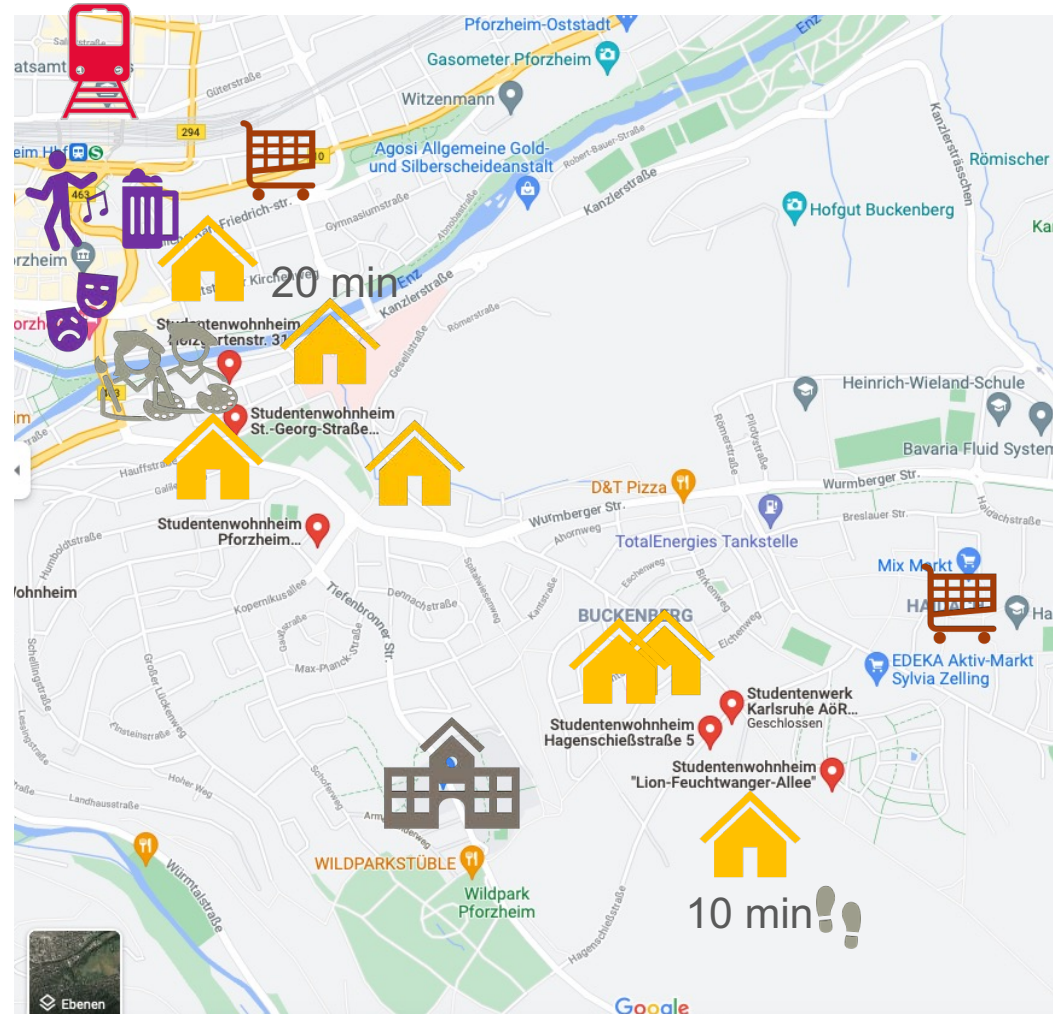
International Programs Office

Pforzheim University

HS PF 

Housing

- There are about 500 rooms in 4 public student halls and 2 private dorms in Pforzheim
- They can be rent via Studierendenwerk Karlsruhe or the respective dorm
- All rooms are single bedrooms: you only share the facilities
- Prices range between 215 and 380 Euro per month (incl. costs for heating, water, electricity and internet)
- More information on our website



Health Insurance

- Students from the EU students need to have a valid EHIC (European Health Insurance Card)
- Students from non EU countries need to buy a public or private health insurance for Germany
- Exceptions: Germany has signed agreements with the following countries for the recognition of national health insurance: Bosnia-Herzegovina, Iceland, Israel, Liechtenstein, Morocco, Montenegro, Norway, North Macedonia, Switzerland, Serbia, Tunisia, Turkey and UK. Students coming from these countries can apply for a document similar to the EHIC and therefore, usually don't have to purchase additional health insurance (please follow the instructions for EU students)
- You have to get your insurance validated by a German health insurance company. You can simply send them an e-mail with your insurance and they will provide you with a certificate
- **IMPORTANT: Please make sure that the name you tell the health insurance company matches exactly the name on your letter of acceptance!**



Enrollment and Cost

Free public
transport

- Tuition: None for exchange students
- Student Service Fee: 93 Euro per semester
(To run cafeterias & facilities + free public transport)
- Free Public transport: With your student ID card you get free access to public transport in Pforzheim and surroundings



Living Expenses

Average cost of living per month in Euro

• Rent	300
• Food	150
• Health Insurance*	110
• Excursions	150
• <u>Miscellaneous</u>	<u>100</u>
• Total	810

- *Health insurance obligatory for all students / prices vary / free if you are insured within the EU

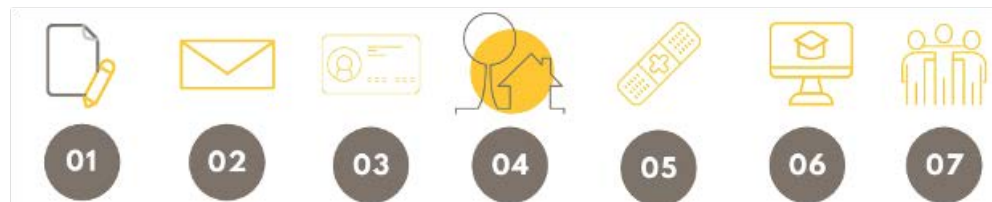


Scholarships

- Your Home University can give you advice about financial support
- International students can also apply to numerous organisations for a scholarship, for example:
 - the DAAD (German exchange service)
 - foundations
 - business-affiliated institutions

Information on the various types of scholarships available in the DAAD scholarship database:

<https://www.daad.de/en/study-and-research-in-germany/scholarships/>





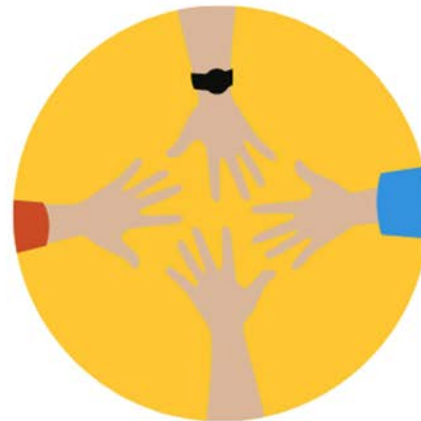
PFORZHEIM UNIVERSITY

Orientation

Extracurricular activities



German Courses



Buddy Programme



01



02



03



04



05



06



Onboarding

- Orientation session at the beginning of the semester incl. registration for courses & Pforzheim City Tour
- German as a Foreign Language (A1 to C1) during the semester (voluntary & free)
- German pre-semester course 4 weeks before lectures start (beginner & refresher, voluntary & free)
- Buddy Programme (match with a Pforzheim student)
- A variety of student associations
- More than 200 international students per year



PFORZHEIM UNIVERSITY Orientation

Extracurricular activities



German Courses



Buddy Programme



01



02



03



04



05



06



Student Facilities

Restaurant and cafeteria: on campus
(2-course meal starting from 2,60 EUR)

Student Union (AStA) and about 14 further student initiatives
(Hosting events, parties & trips for all students)

https://www.hs-pforzheim.de/en/studies/student_life/student_initiatives

Sports & cultural activities (organized by Student Union)

- About 20 sports groups, mainly off campus
- Various cultural activities (theatre, excursions...)



Student Initiatives

Organizing cultural and sports activities
As well as parties & excursions for all students



Börsenverein Pforzheim

Campus X (contact to companies)

Commeo (Student Events)

Elsa (for Law students)

Entrepreneurs Pforzheim

Gemini (Support for international students)

initiAID (Charity Work)

Persolve (job application training)

Remedy (ecology & sustainability)

Rennschmiede (university racing team)

Sonar (research)

UNICEF

VWI (workshops & excursions)

Werbeliebe (communication agency)

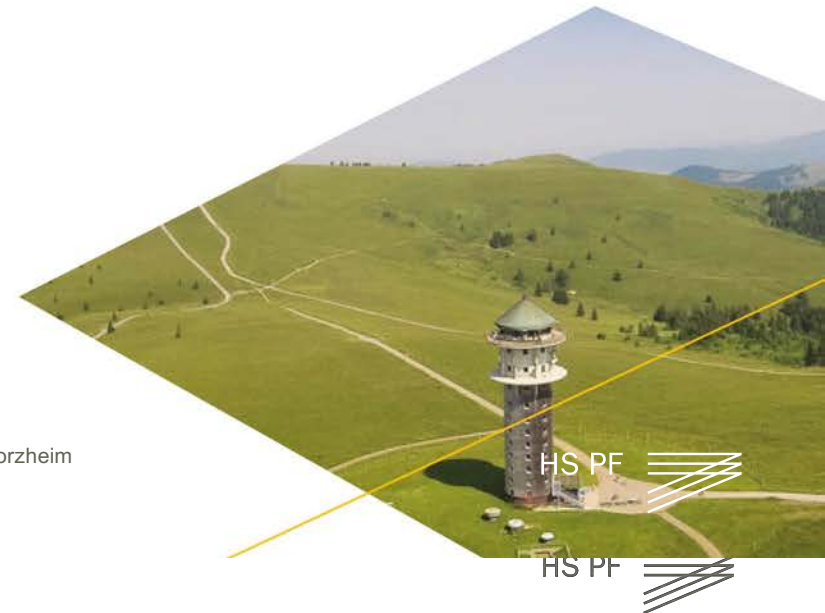




HOW ABOUT
A HIKE?

Explore the surrounding area – the Black Forest

- Germany's largest continuous forest area
- 160km in length, breadth up to 50km
- Highest peak: Feldberg (1.439m) – Skiing possible!

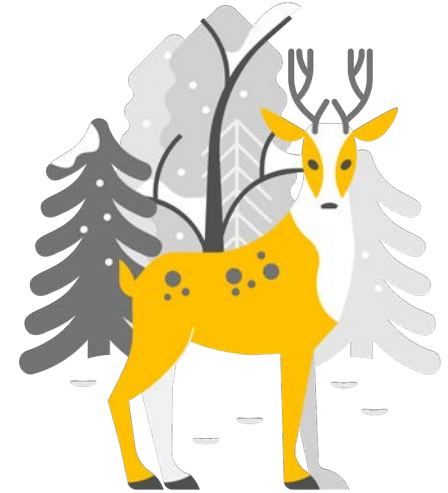


What to do in your free time?

Pforzheim



- Wildpark (next to the University): visit the muse during two lectures or cuddel an Alpaca in the petting zoo (free entry)
- Museums
- Theatre & Orchestra
- Gasometer (exhibitions)
- Black Forest Wave (Schwarzwaldwelle for surfers)
- Gateway to the Black Forrest: West Way Trail
- Baumwipfelpfad
- Lake House (Seehaus)



NATURE OR CITY STROLLS?

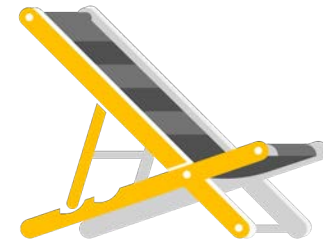
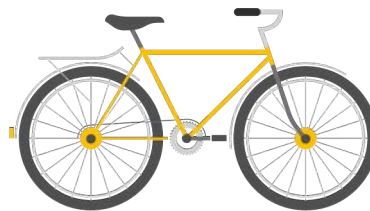
43 / 26



What to do in your free time?

Surroundings

- Black Forrest National Parc (Hiking, Biking, Winter Sports)
- Folk festivals (Oktoberfest, Cannstatter Wasen, Stuttgarter Frühlingsfest - Spring festival, wine festivals etc.)
- Carnival (in February / March)
- Christmas Markets (November & December)
- Very known wine regions Pfalz & Baden
- Theme parcs: Europapark & Holiday Park
- Trips to France, Switzerland, Austria, Czech Republic or Italy



Contacts

We are here to help you

ISP

FOR COURSE RELATED QUESTIONS



Jochen

jochen.ebert@hs-
pforzheim.de



Uta

Business School

isp@hs-
pforzheim.de



Rebecca

isp@hs-
pforzheim.de



Henriette

School of
Engineering

isp-
engineering@hs-
pforzheim.de



Julia

Coordinator Incoming Students

aaa@hs-pforzheim.de



Meike

PFORZHEIM UNIVERSITY

Q & A

Ask the International Office



International Programs Office

Pforzheim University



**Bis hoffentlich bald
in Deutschland!**

www.hs-pforzheim.de/international